



Data for life

Separating data from applications

Anze Droljc
anze.droljc@better.care
<https://www.linkedin.com/in/anzedroljc/>





Healthcare needs data



Care is shifting from hospitals
to **communities** and **the home**





Care is shifting from hospitals to **communities** and **the home**

Citizens want to be **more engaged** in **managing** their health and wellness, demanding **full access** to **their health record**





Care is shifting from hospitals to **communities** and **the home**

Citizens want to be **more engaged** in **managing** their health and wellness, demanding **full access** to **their health record**

COVID-19 has **accelerated innovation** and **new models** of care **delivery**





“The **dissatisfaction** with **monolithic EHR** systems and their **inability to quickly respond** and support new clinical and regulatory **requirements** has never been more **obvious.**”
- **Gartner Group**

Hype Cycle for Real-Time Health System Technologies,
July 2020





Healthcare needs data



"We have been **struggling** to make **data follow the patient for 25 years!**

Interoperability is not working!

We need a **fundamentally different approach.**"

- Jordi Piera Jimenez

Director of the Digital Health Strategy Office
at Catalan Health Service



”At the moment most live patient data is **held by the companies** who provide the electronic patient record systems. But **it isn’t ‘their’ data**. And although isn’t ‘their’ data, too often these systems act as a barrier to accessing it. And it means the **data might not be accessible** and can’t be properly shared, providing a **barrier to the research – innovation**”

- Matt Hancock

Secretary of State for Health and Social Care
Rewired, March 18th 2021



”I want to explore whether we can remove this **barrier to innovation** and **separate the data layer** from the **application layer** so providers can offer the **application software** and the **data will be stored separately** and securely in the cloud, then we have a **consistent data platform across the NHS.**”

- Matt Hancock

Secretary of State for Health and Social Care

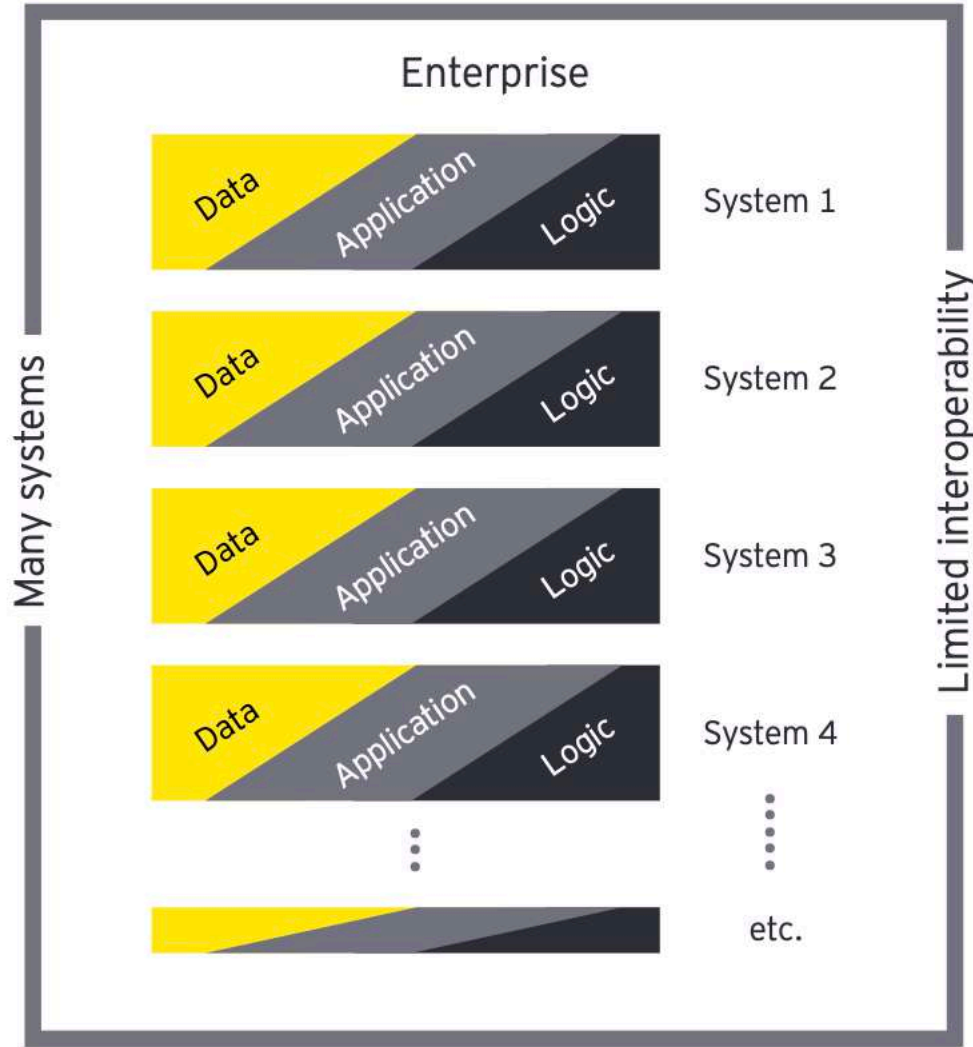
Rewired, March 18th 2021



“For health care organizations, the shift in the **ecosystem** will likely look something like this:

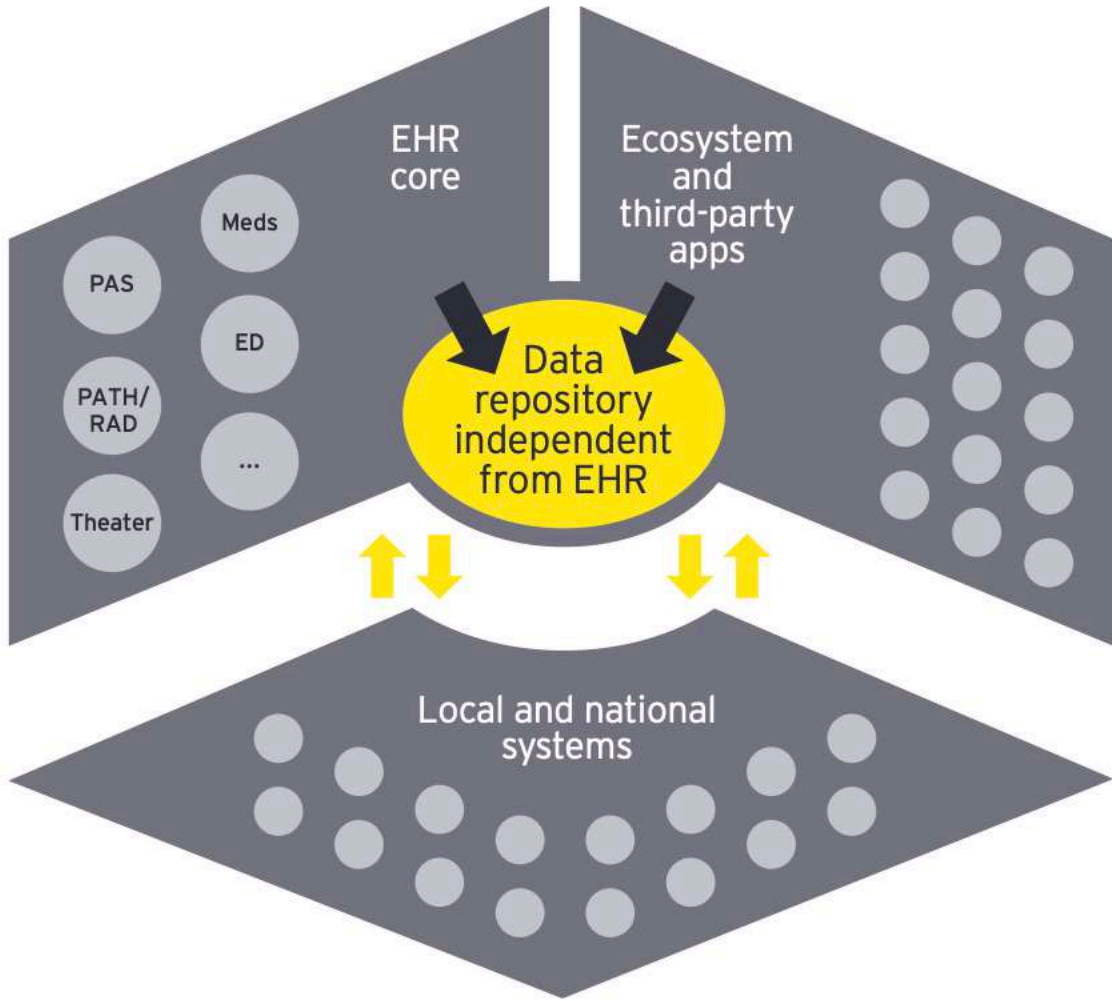
an **open platform** and a **clinical data repository**, with integration of legacy and third-party elements, that support easy **data migration** and are **transparent** to **all applications** connected to the platform.”

Evolution towards the health platform enabling the health ecosystems of the future



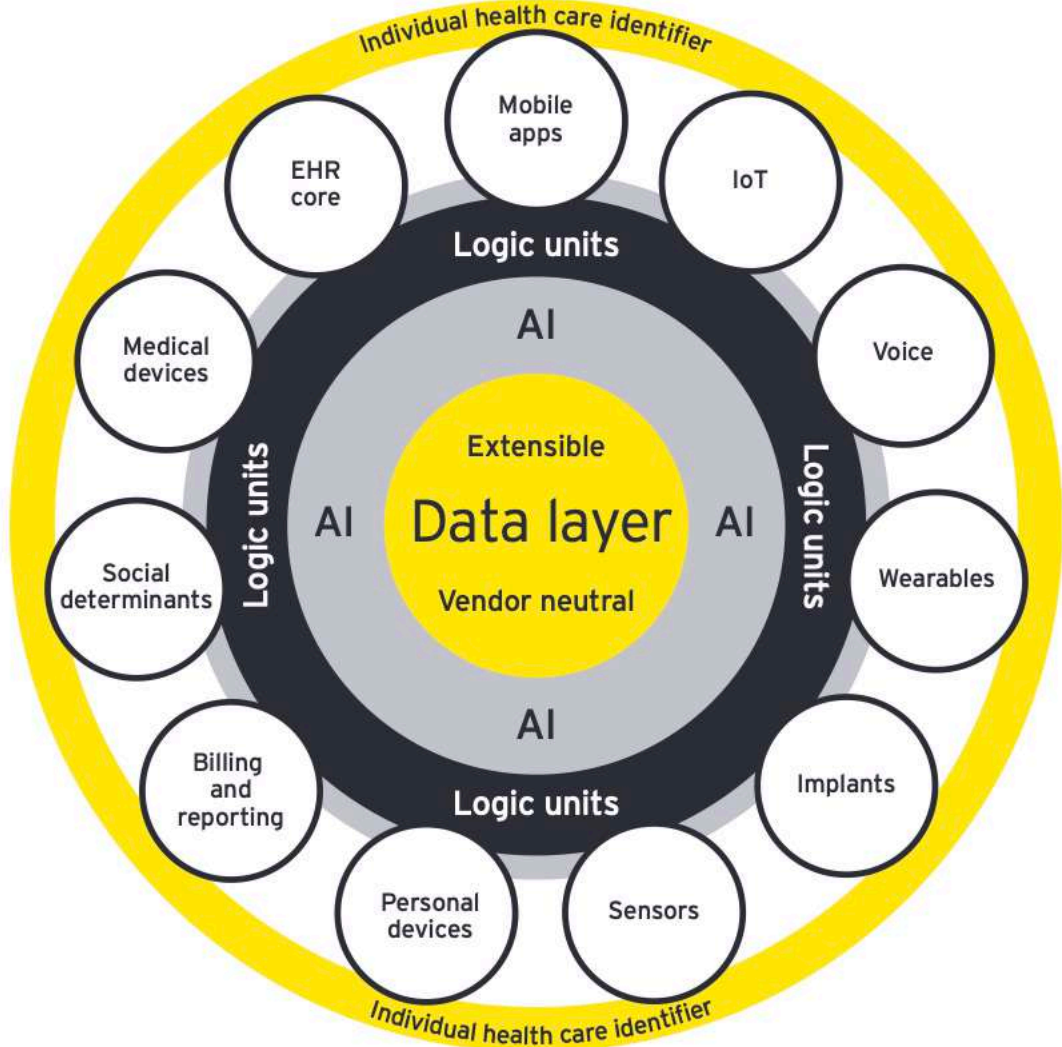
Present-day enterprise systems

Many systems all with intimately bound data logic and applications. Within one enterprise, 200-400 systems can exist made up of several different vendors (many of which are not complementary) and where logic is bundled with the application.



Intermediate-state platform

A more flexible, dynamic infrastructure will be built around existing systems, communicating through modern APIs. In the near term, platform-based systems and legacy EHRs will coexist by maintaining basic functionality in legacy systems while building and innovating in a platform-based environment.

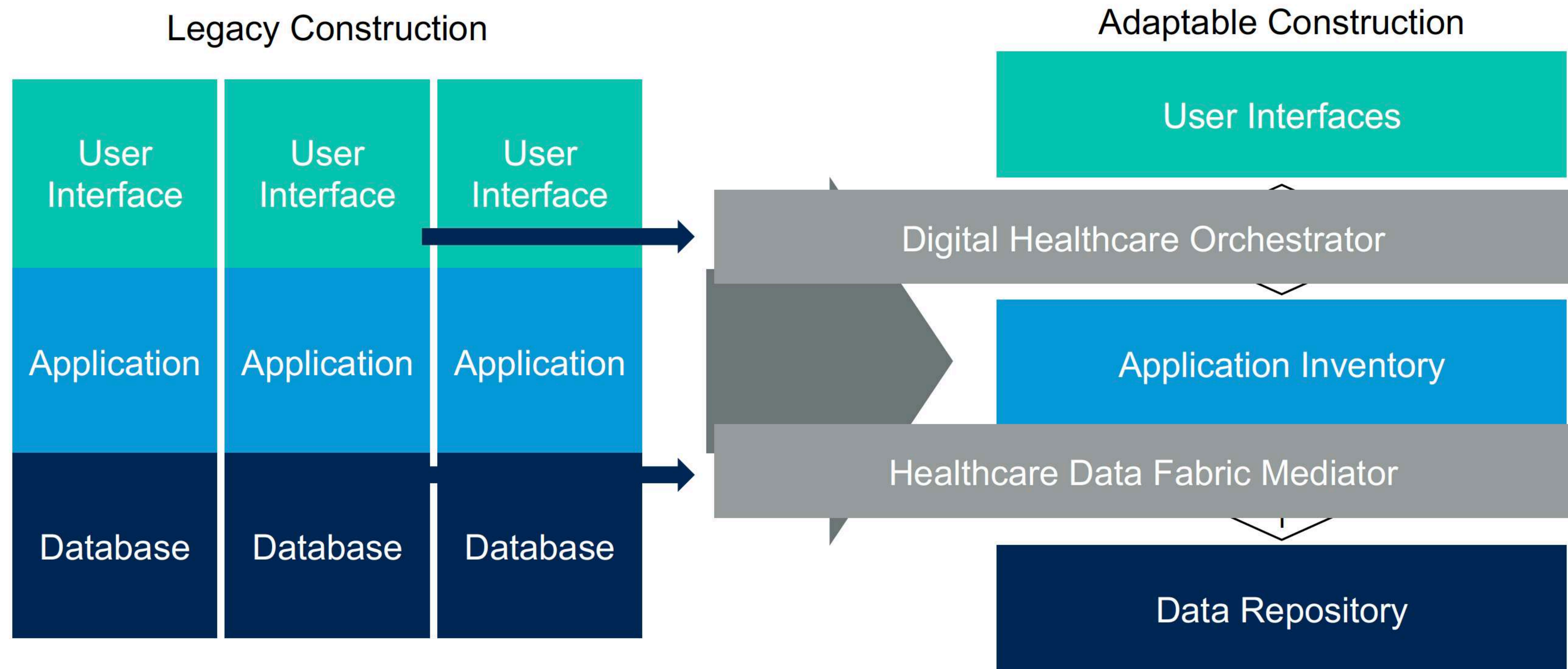


Future-state platform

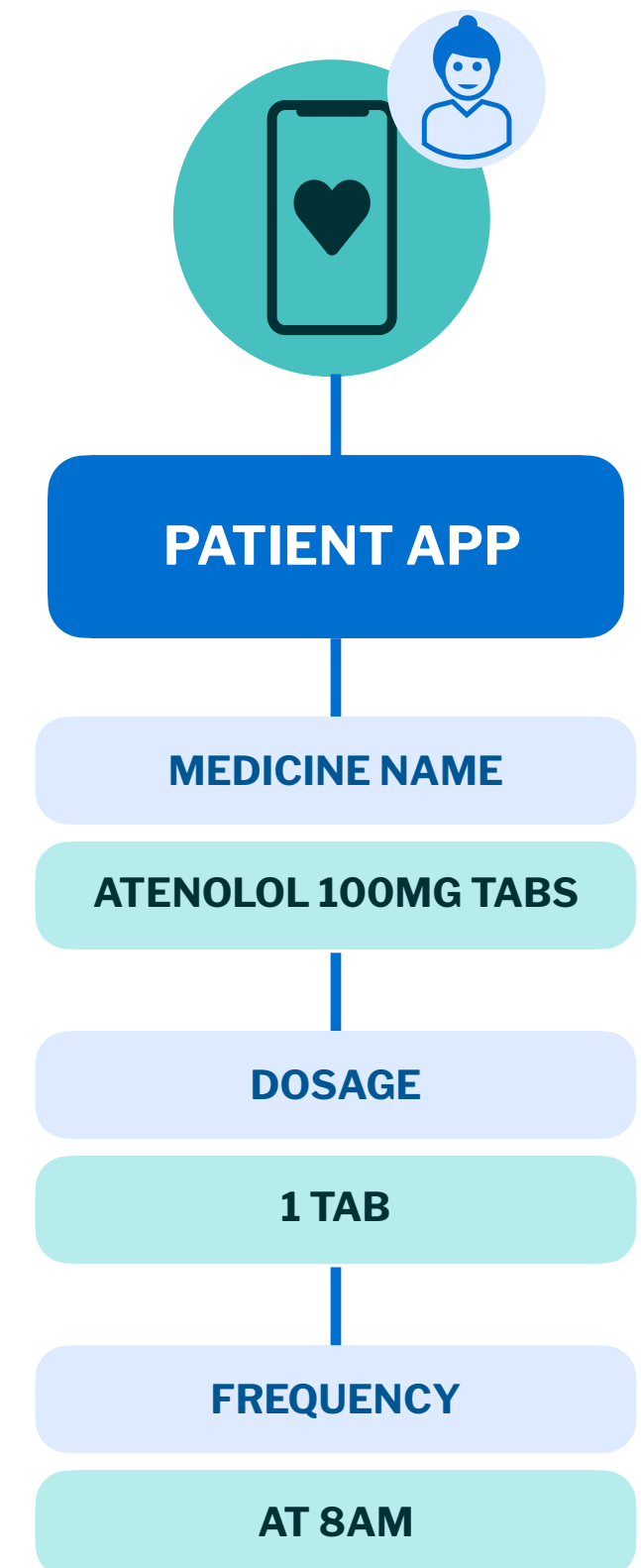
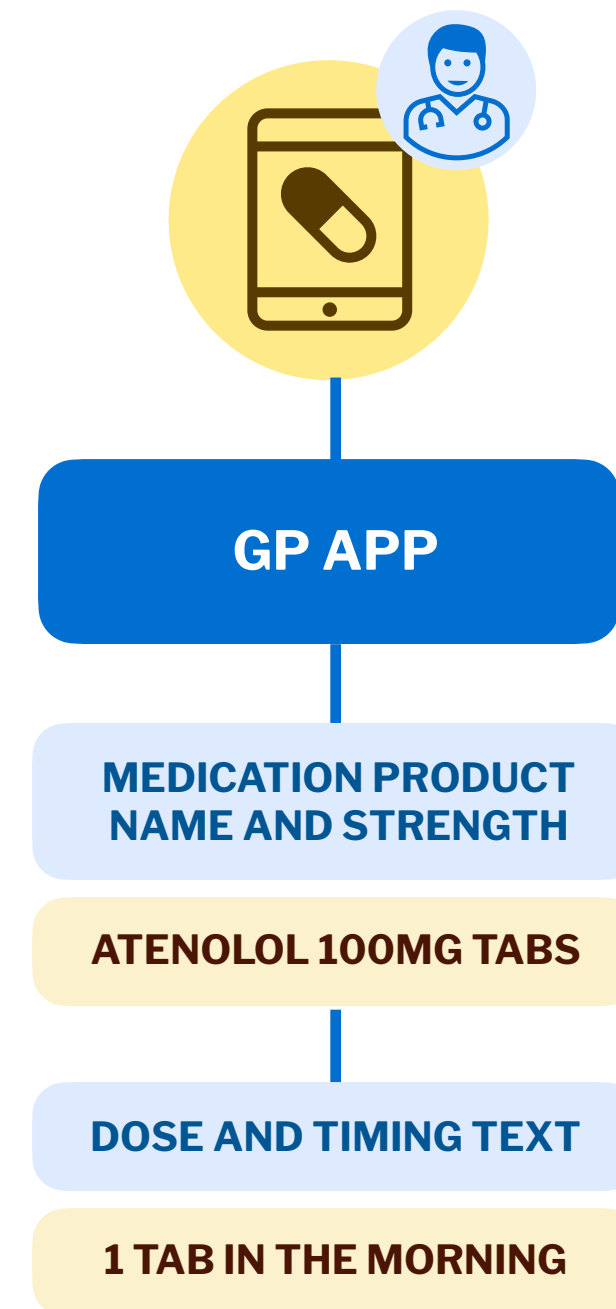
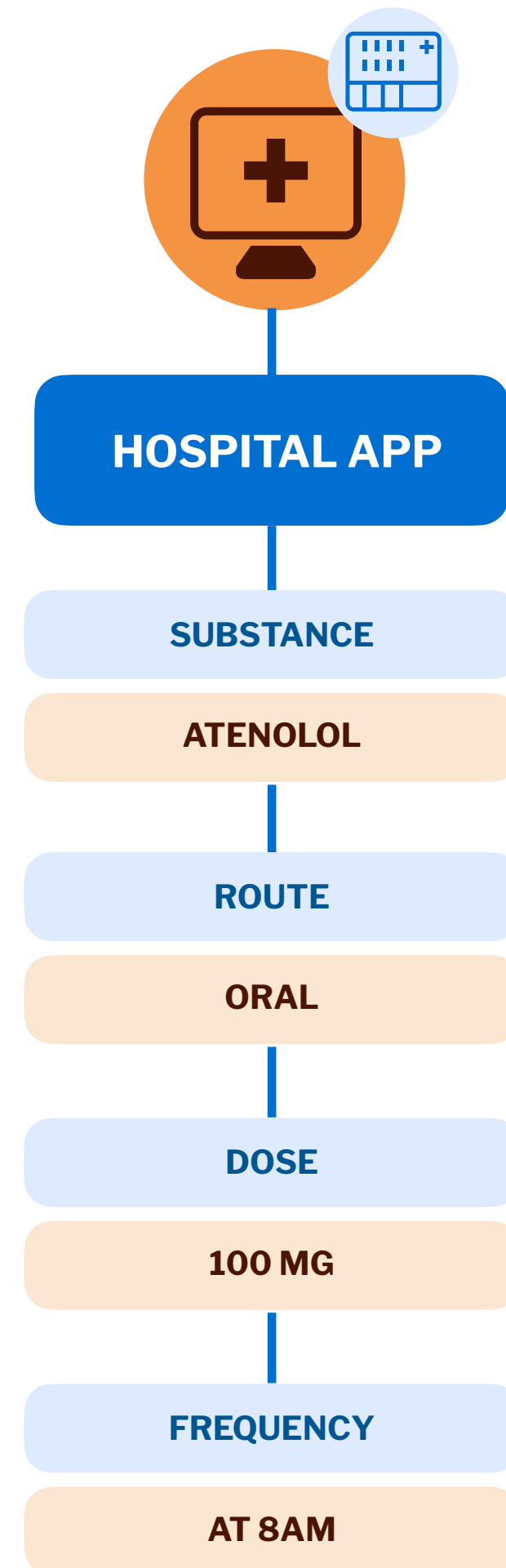
A cohesive technology stack, giving a unified experience for patients, professionals and consumers; unique data at the center accessed by applications in real time by microsystems.



The Target Architecture Is Clear Enough

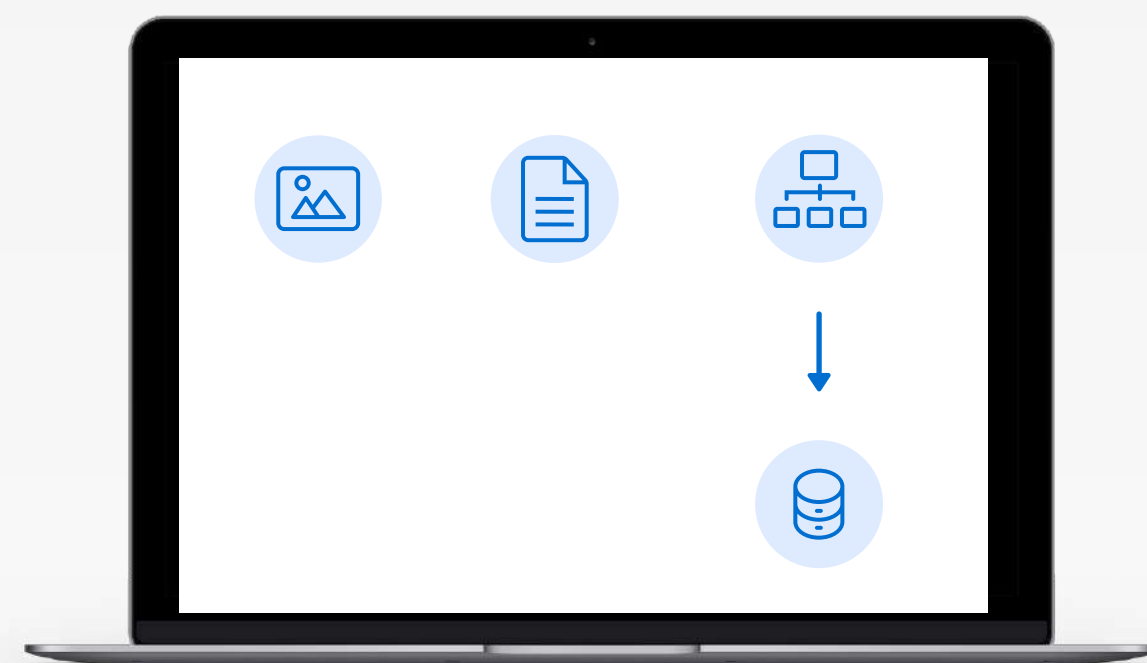


Each application stores data differently

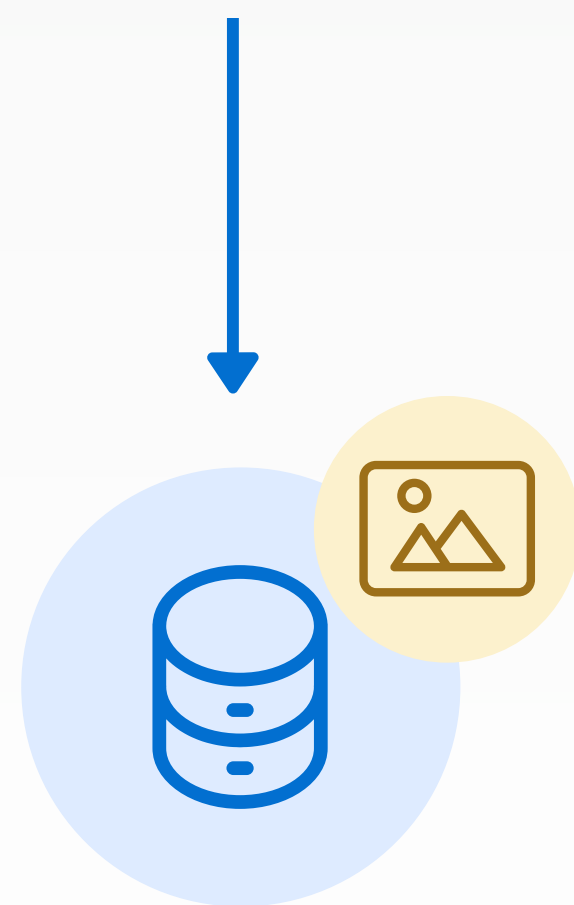


Health & Care Data

Present : solved for images and documents



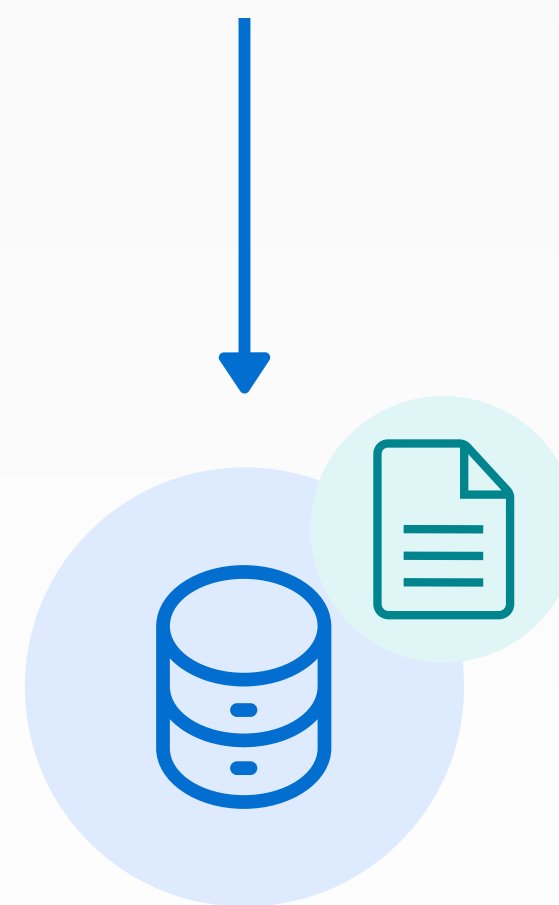
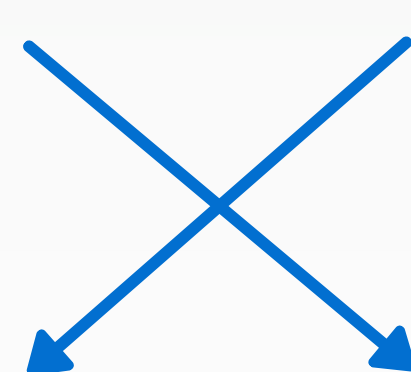
Application A



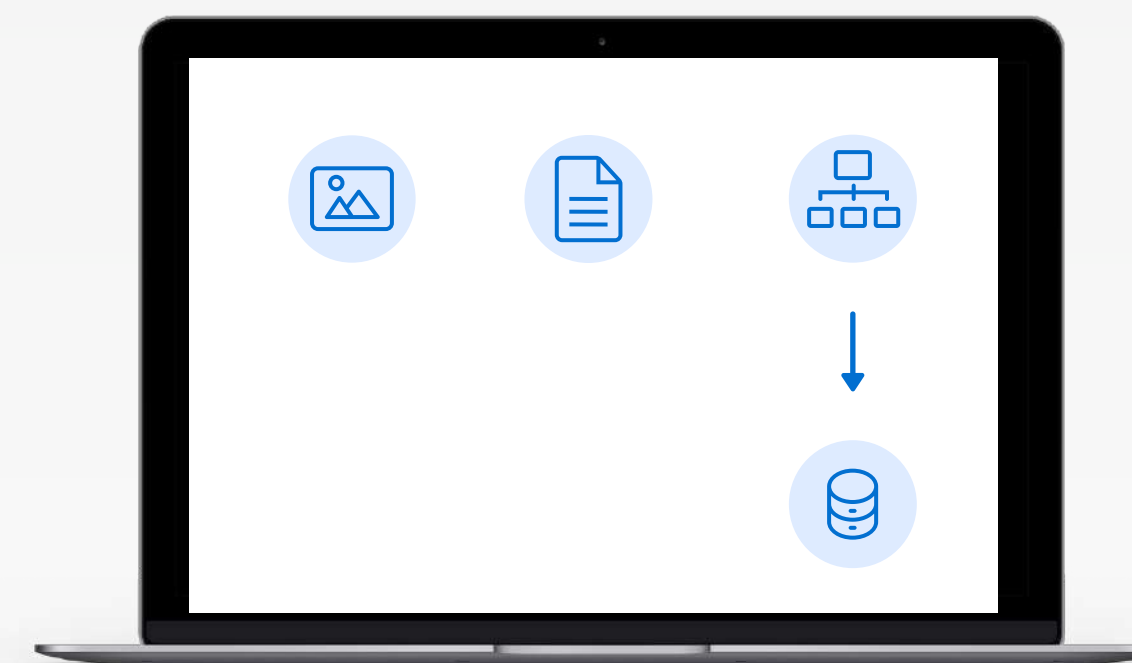
**IMAGES
PACS**



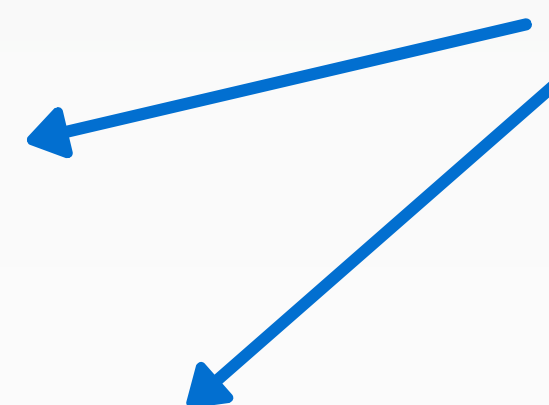
Application B



**DOCUMENTS
HL7 / CDA / pdf**

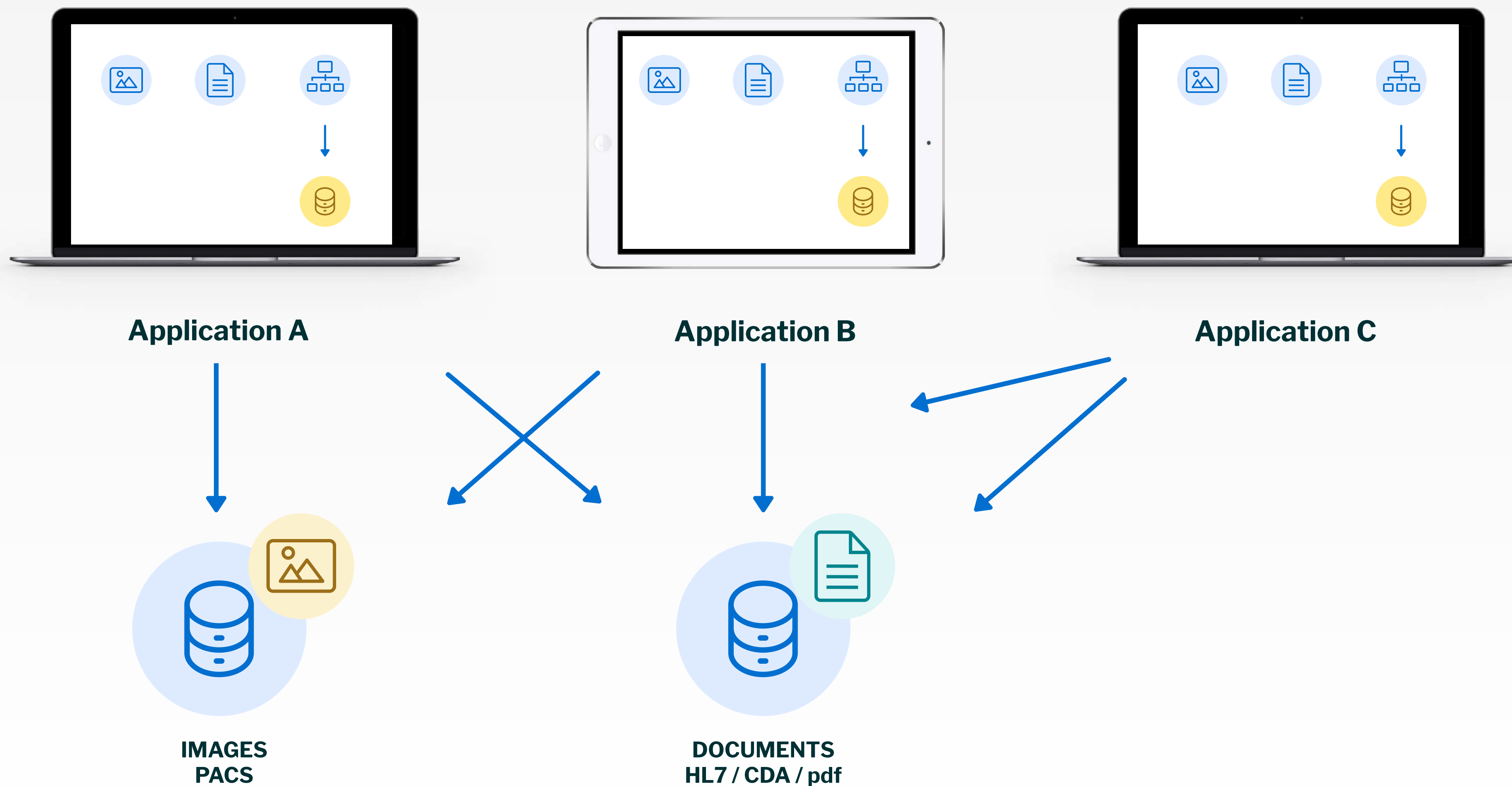


Application C



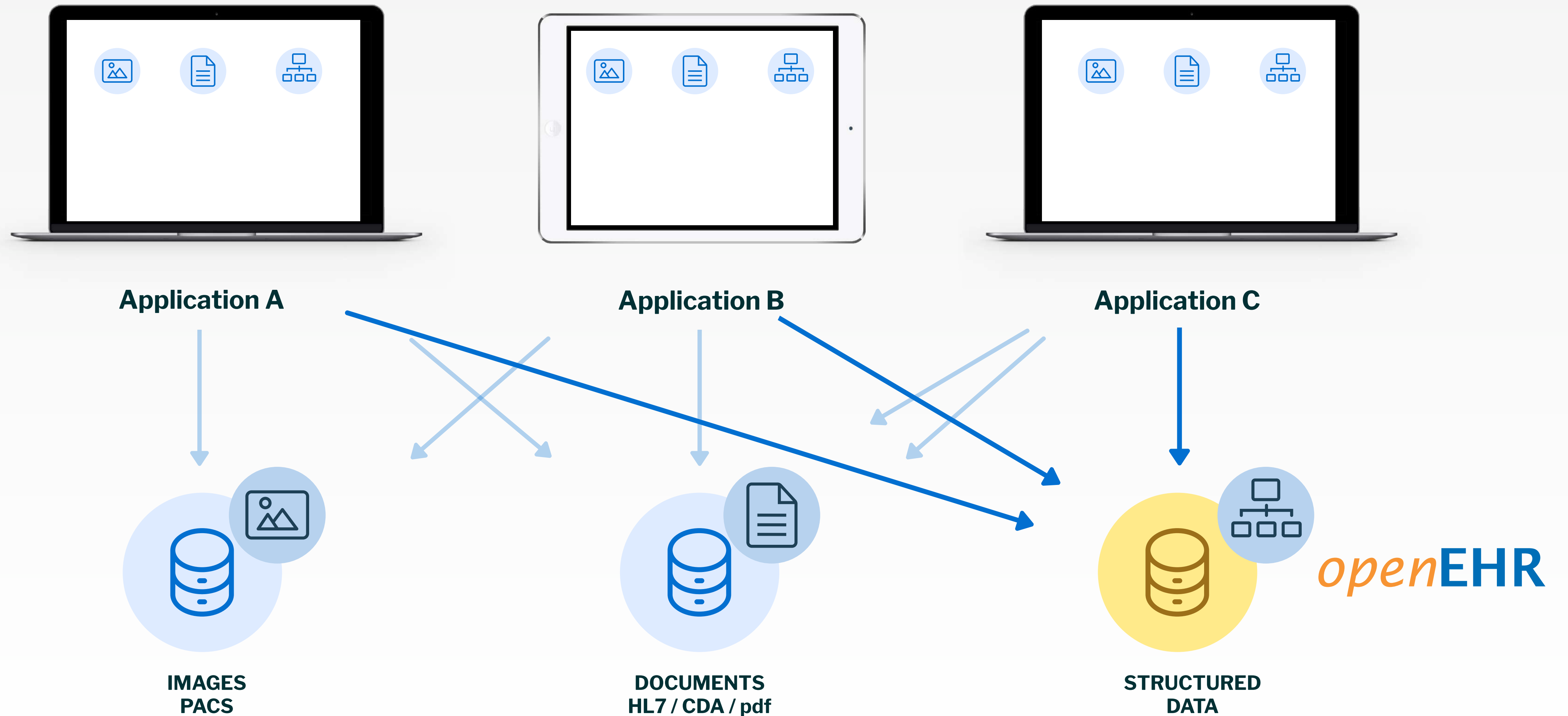
Health & Care Data

Present : solved for images and documents

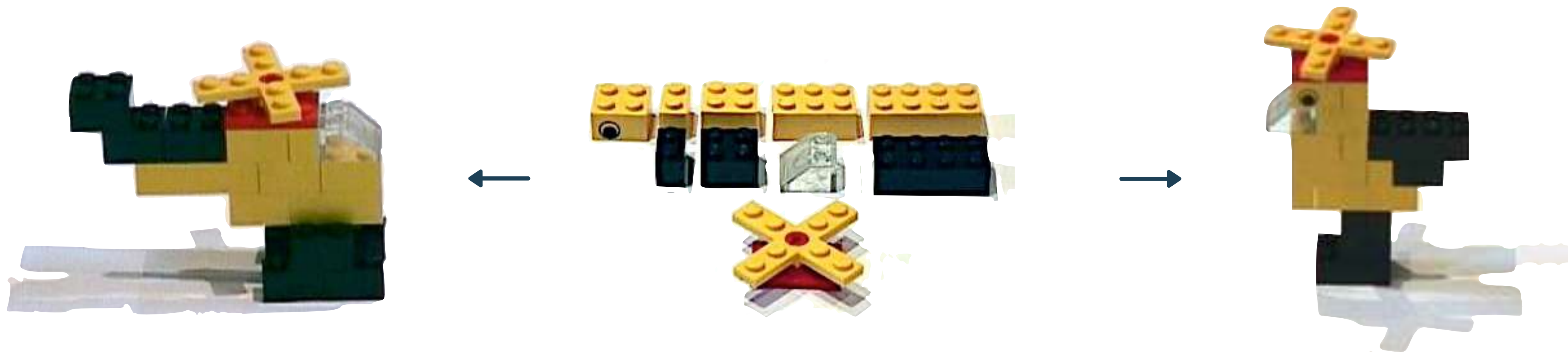


Health & Care Data

Future: vendor independent, open data

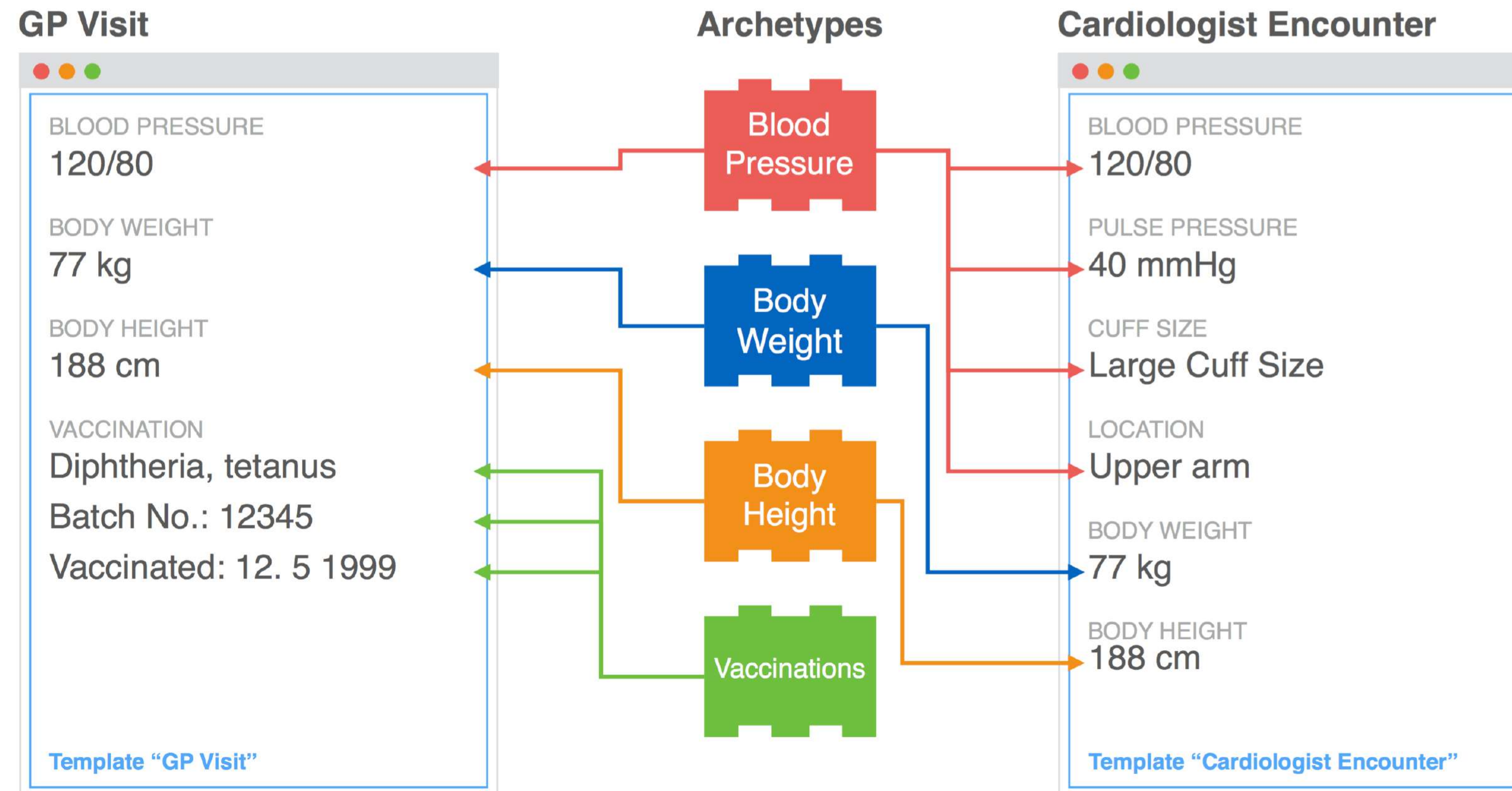


Elementary instructions/designs to create meaningful structures



Templates: Use Case Specific

Customize the data model for the form, report or message



openEHR

An **open**, domain-driven **platform** for developing flexible e-health systems

Separation of **content** and **technology**

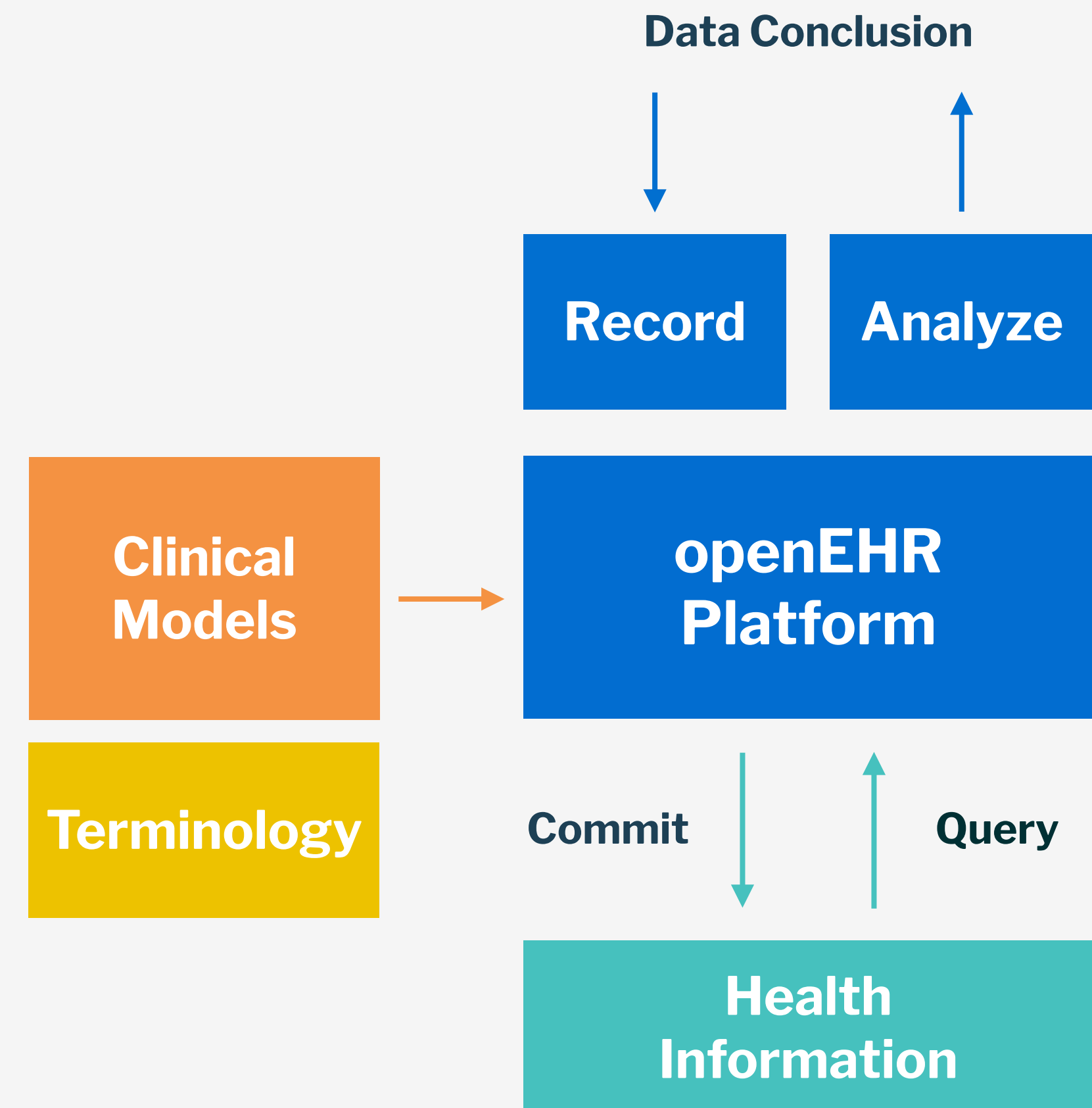
Computable data & terminologies

Two-level **modelling**

- Archetypes – **maximal** data set
- Templates - data set for **use case**

Querying

Multi-lingual





openEHR global community:

101 countries

1,500+ clinicians

1,050 clinical models

*open***EHR**





Digital health platform

By 2023, the number of active citizen developers at large enterprises will be at least four times the number of professional developers.



By 2023, 40% of professional workers will orchestrate their business application experiences and capabilities like they do their music streaming experience.

By 2023, 40% of professional workers will orchestrate their business application experiences and capabilities like they do their music streaming experience.

Recommendations:

Reject any new monolithic solutions, sold or proposed in-house. Plan to renovate or replace the old ones and begin to move to **assembled application experiences** based on packaged business capabilities.

Take an outside-in view of customer/employee needs by using **design thinking** to discover role-centric business practices and their required application experience.

Top 10 Application Predictions Through 2025, May 2020

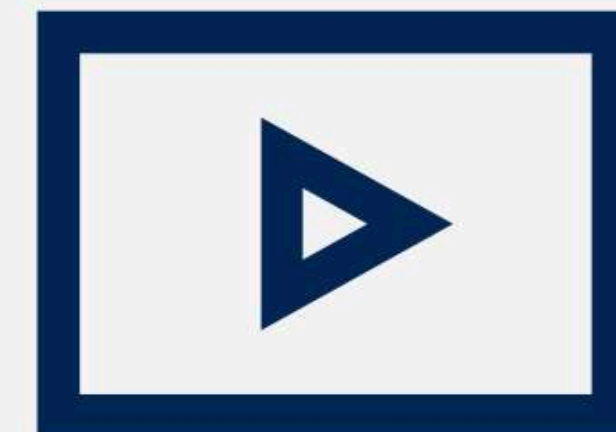
Consumer Experience: We All Have Been There



Vinyl: All or Nothing



**Mix Tapes:
For the Well-Equipped**



Playlists: Active Personalization

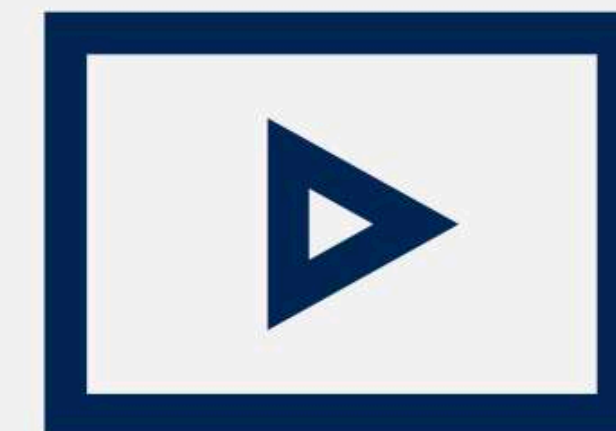
Consumer Experience: We All Have Been There



**Monolithic
Applications:
All or Nothing**



**Application
Integration:
For the Well-
Equipped**



**Composable
Enterprise:
Active
Personalization**

Consumer Experience: We All Have Been There



**Monolithic
Applications:
All or Nothing**

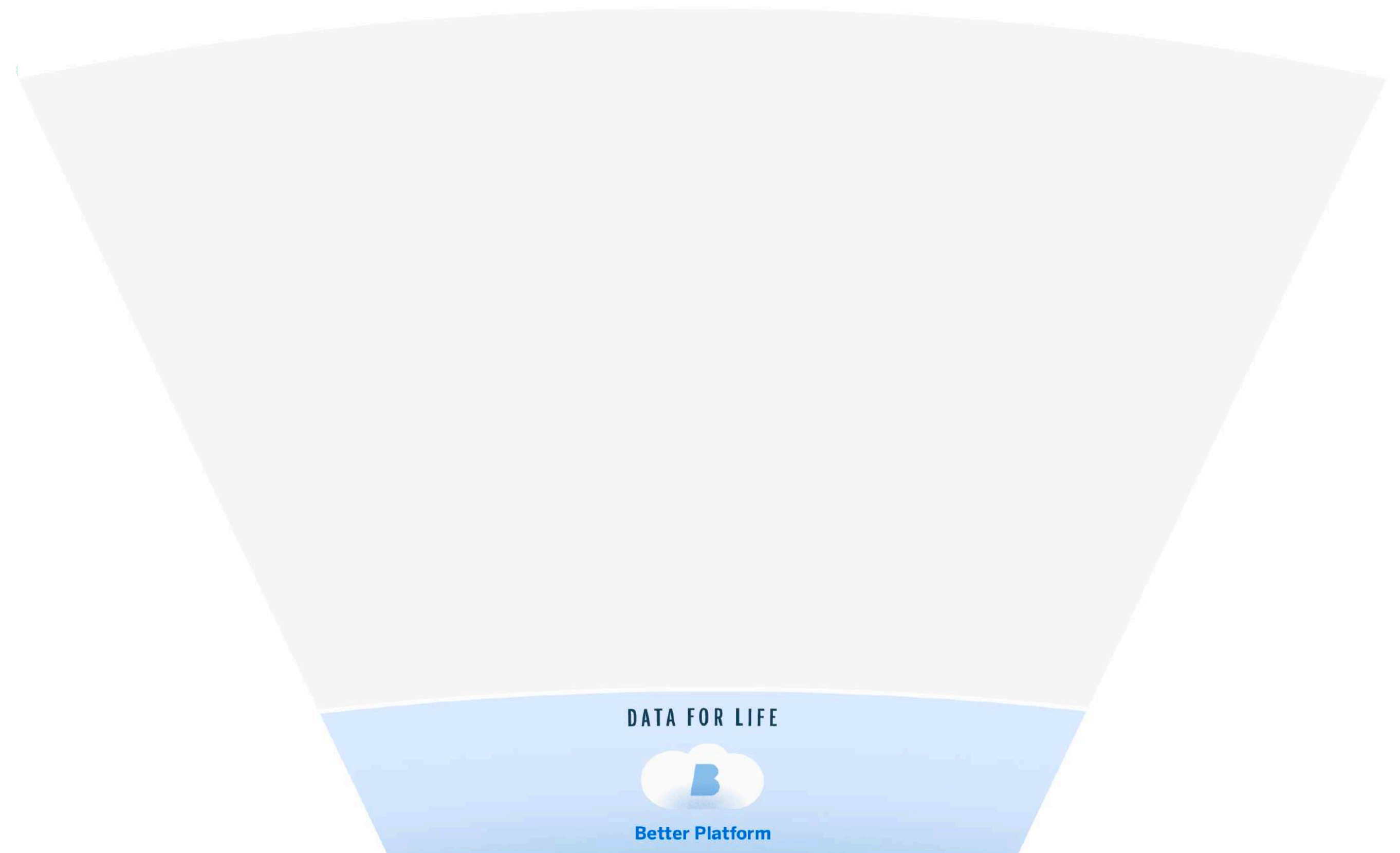


**Application
Integration:
For the Well-
Equipped**



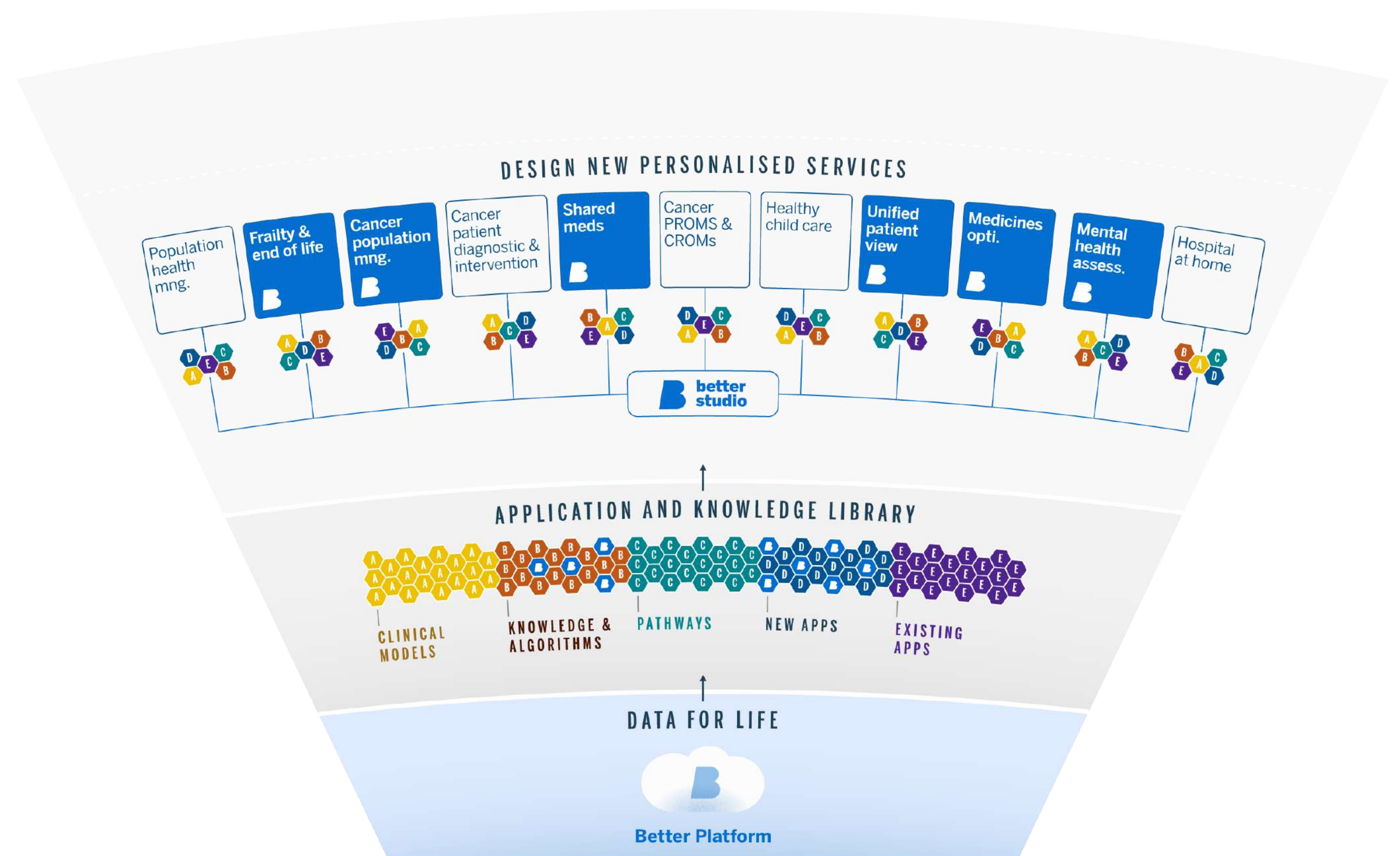
**Composable
Enterprise:
Active
Personalization**

**Unified care record built around the
patient, not institution:
“one patient, one record”**



Governance of data models
Choice of apps, vendors

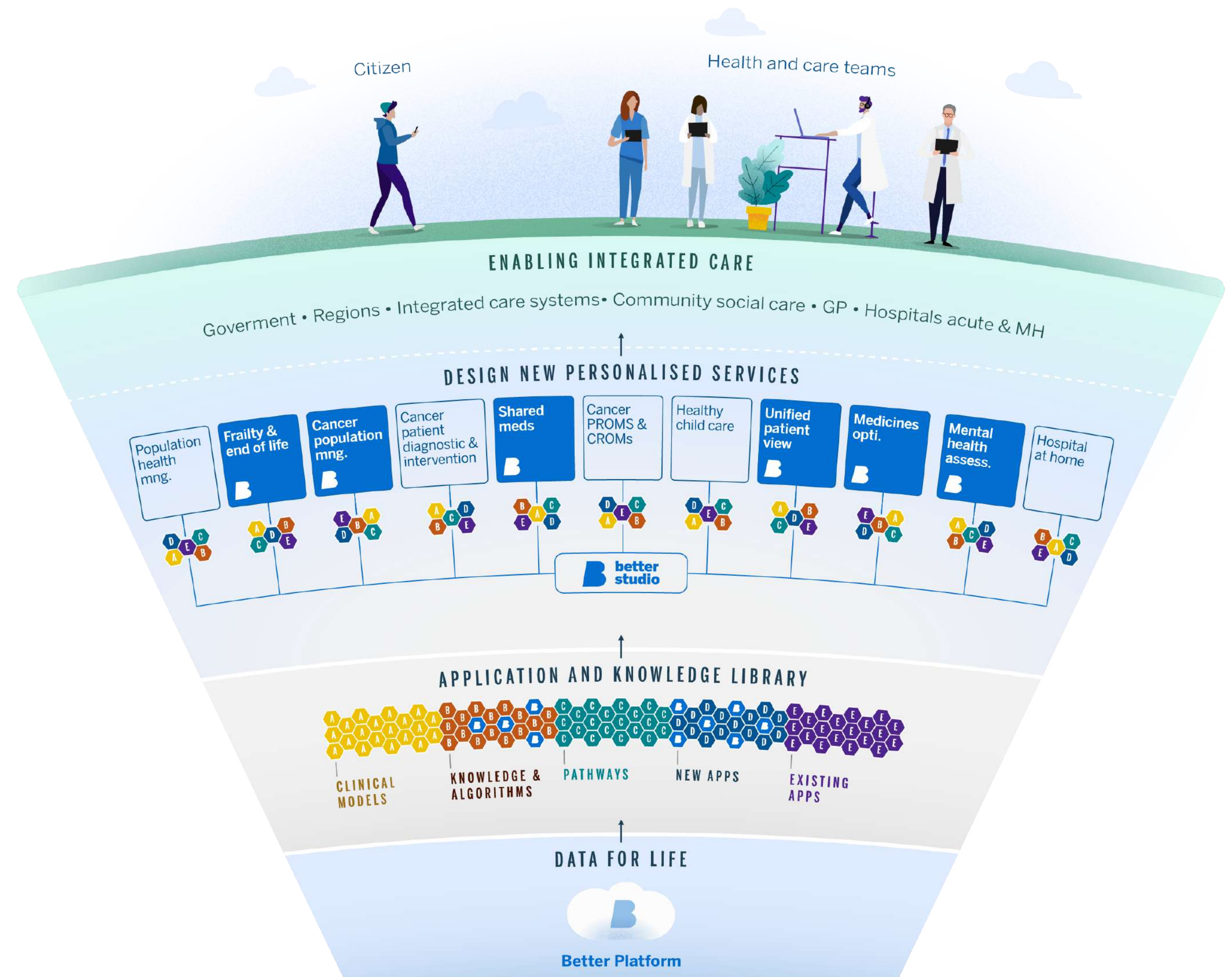
**Unified care record built around the
patient, not institution:**
“one patient, one record”



Ecosystem of apps, built once to support new models of care

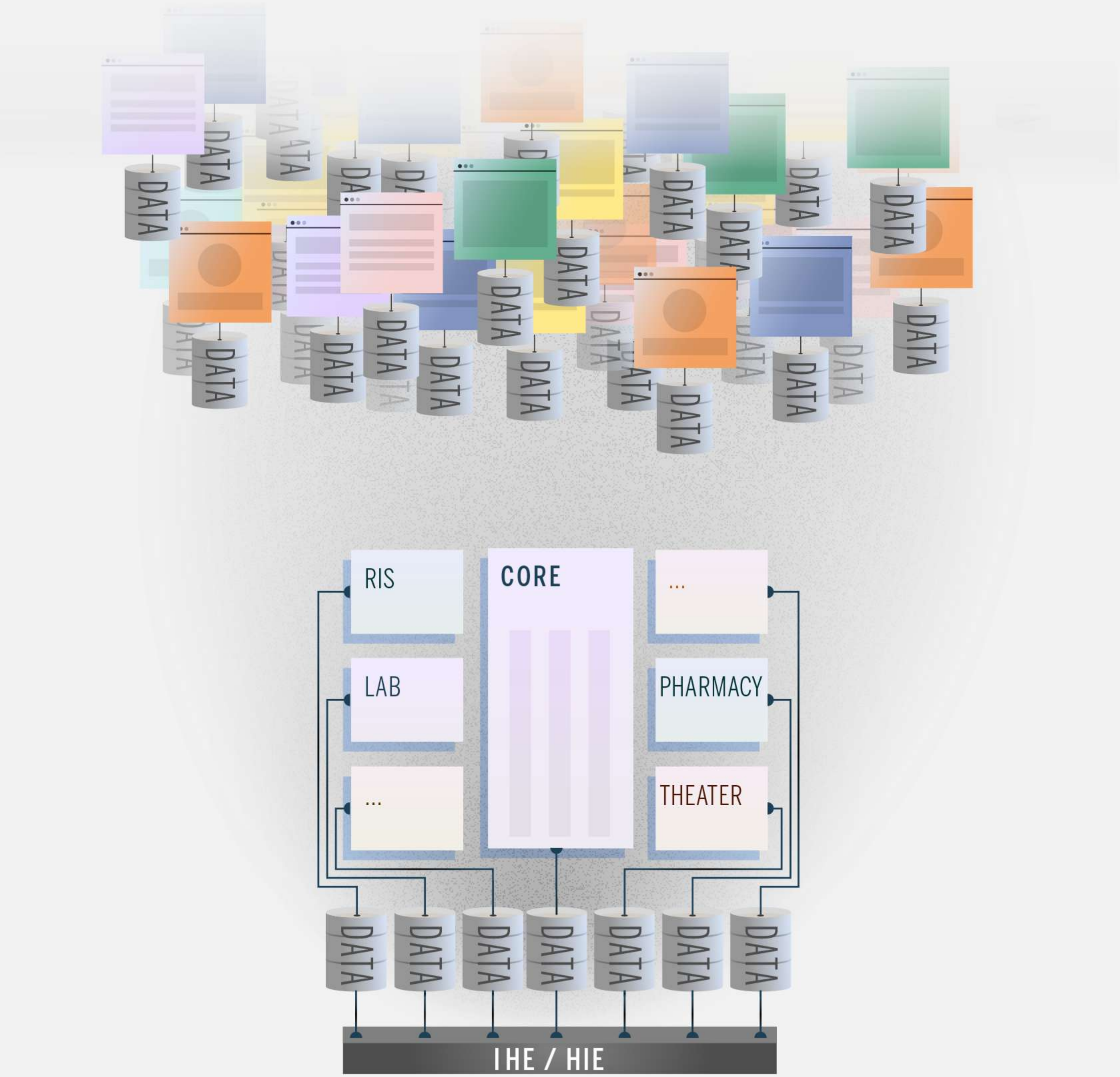
Governance of data models
Choice of apps, vendors

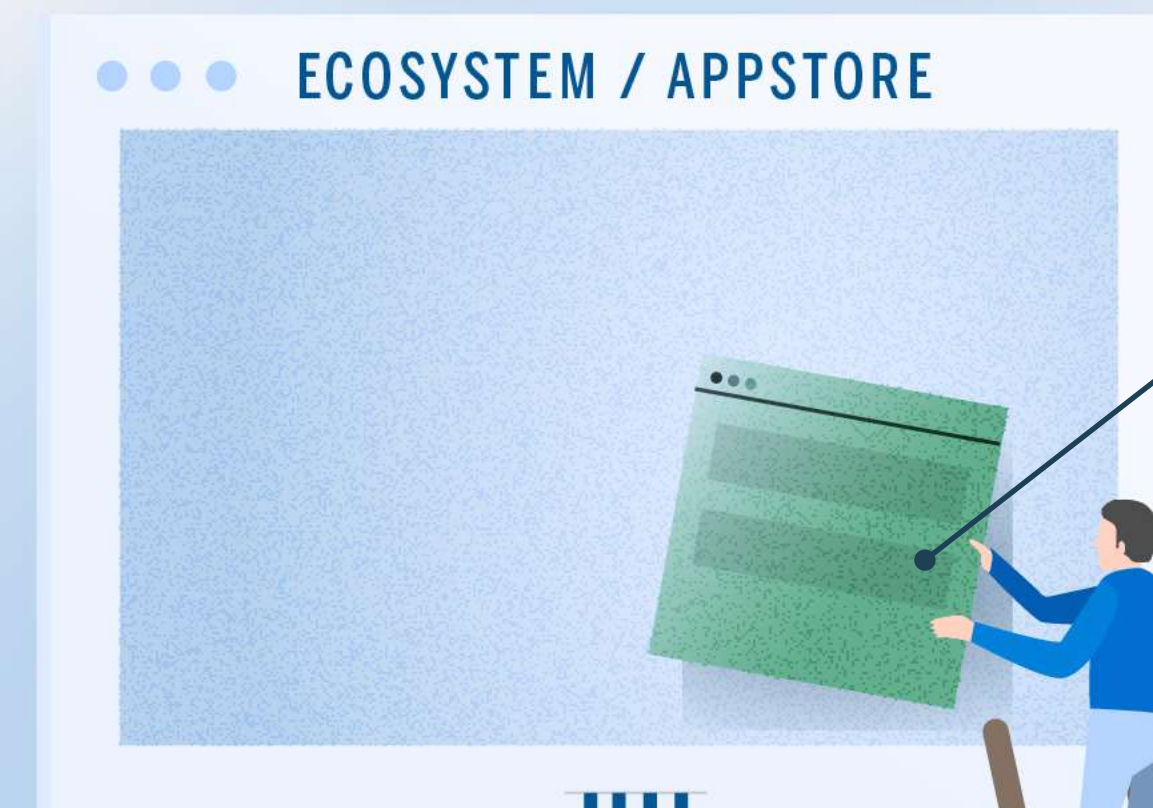
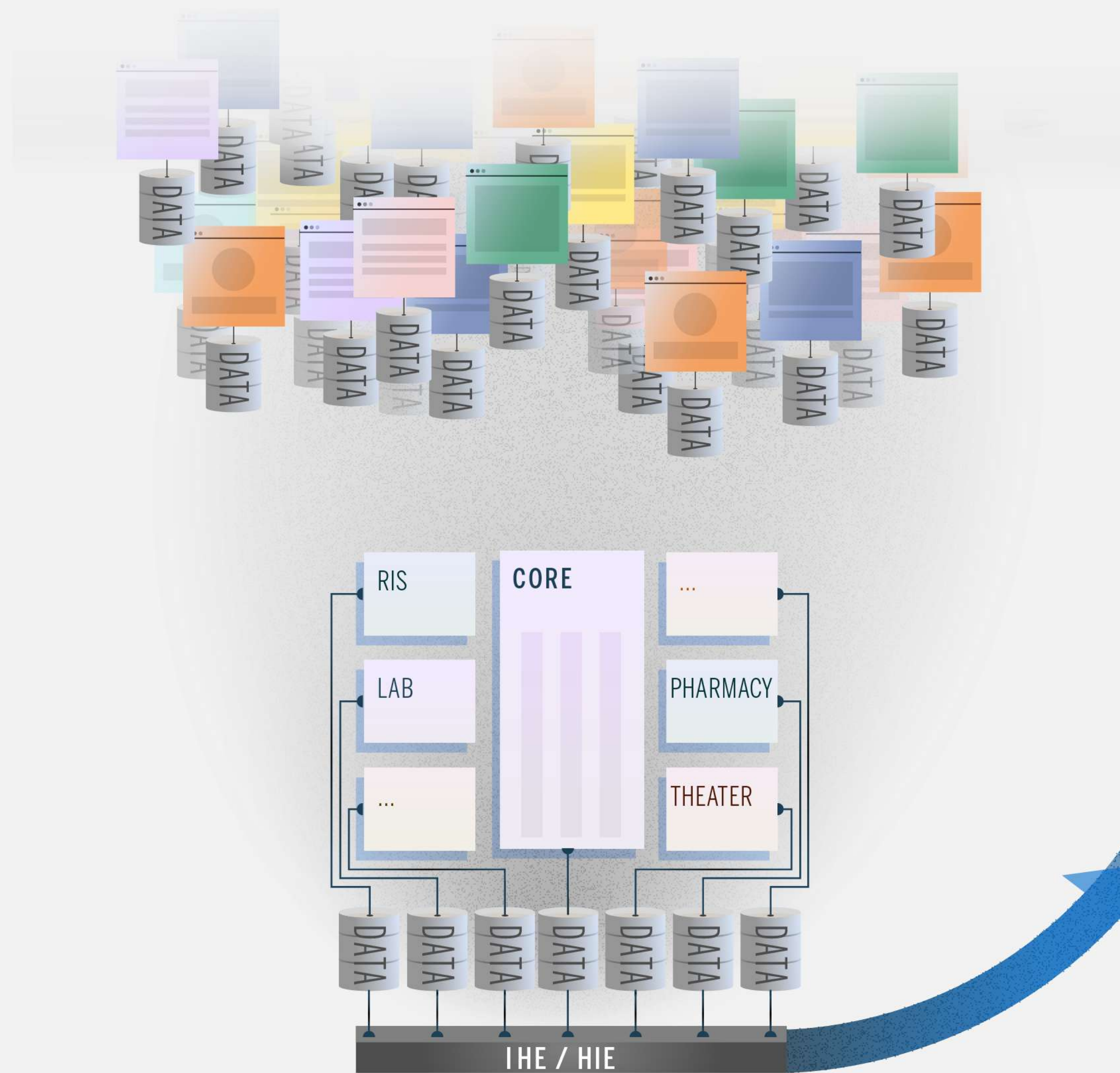
Unified care record built around the patient, not institution:
“one patient, one record”



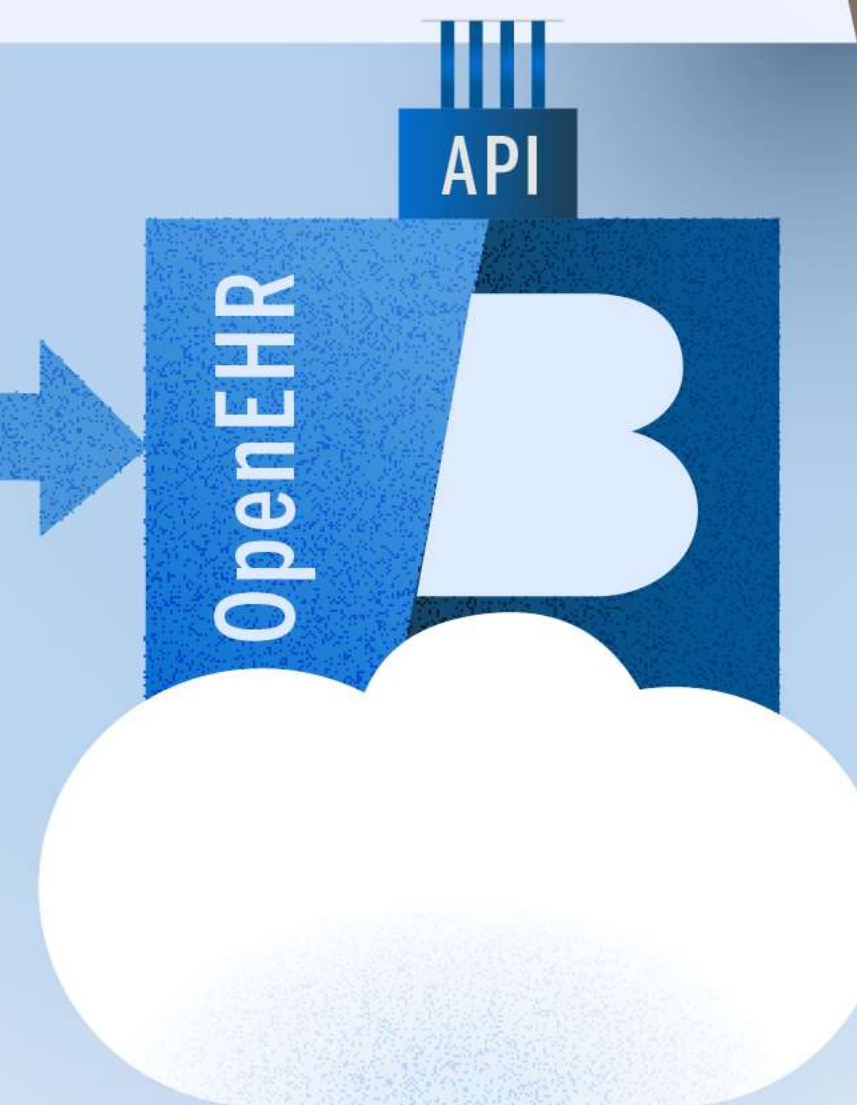


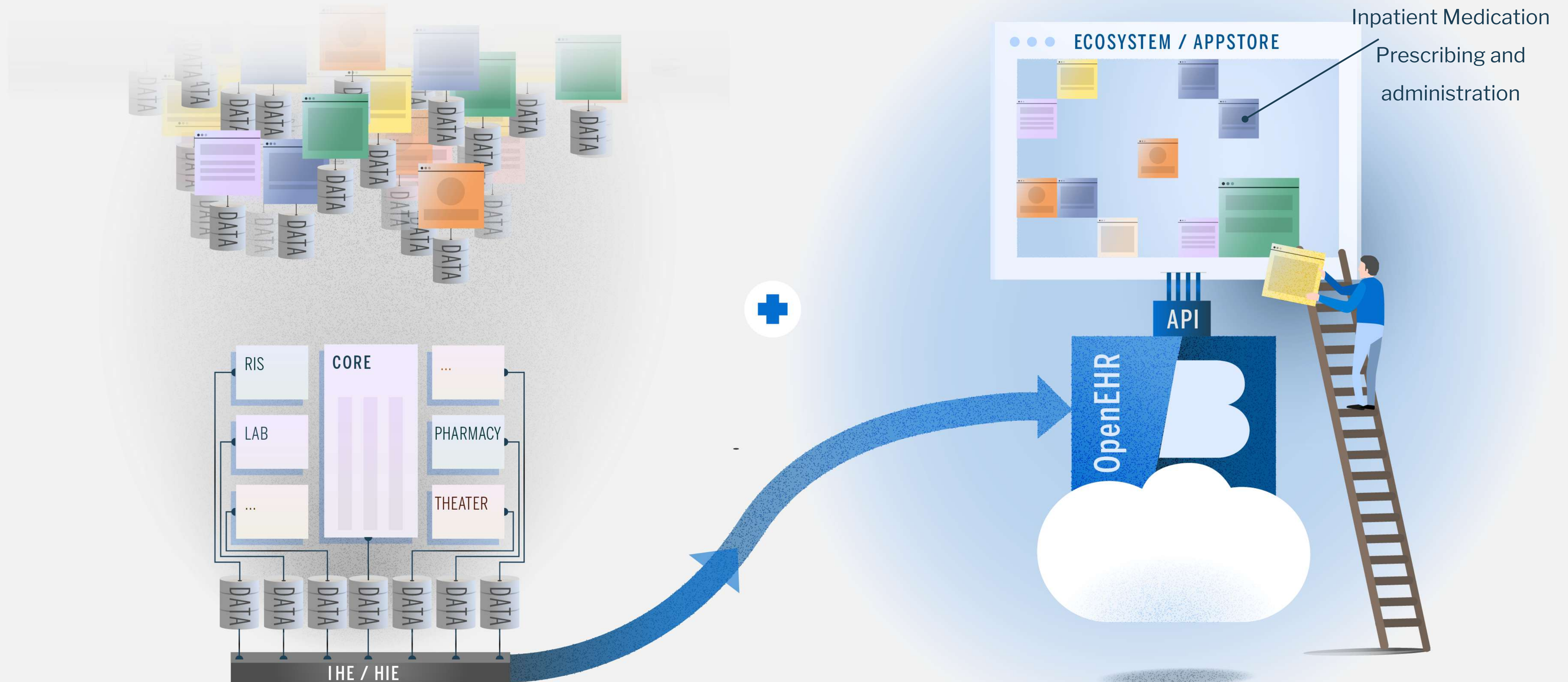
How to start?



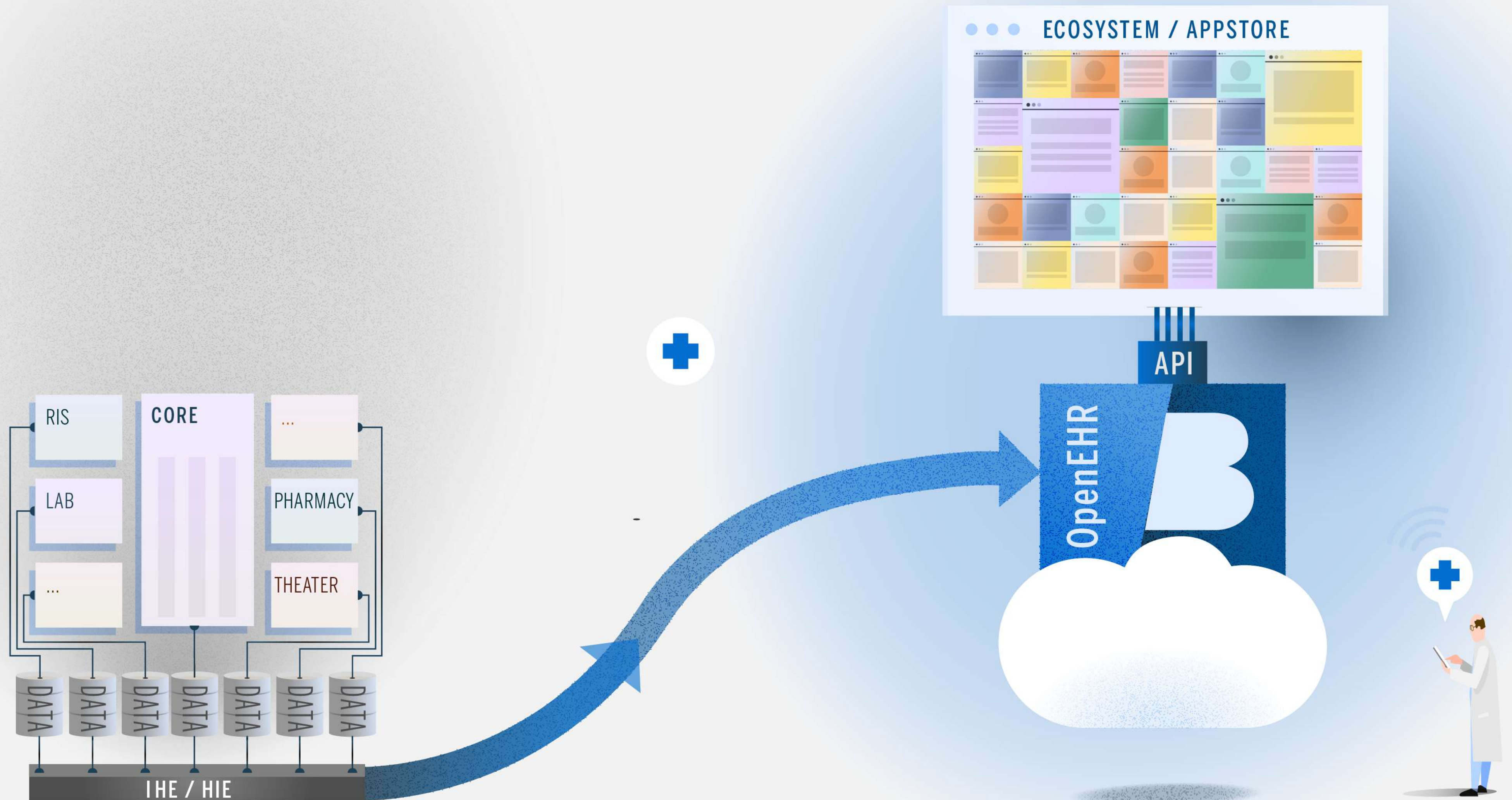


Heart Failure Dynamic
Care planning

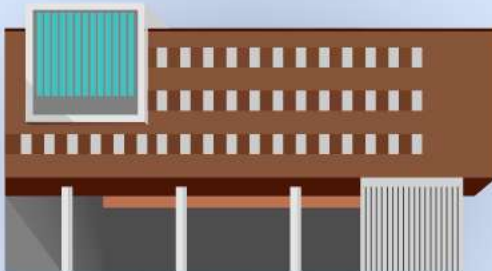
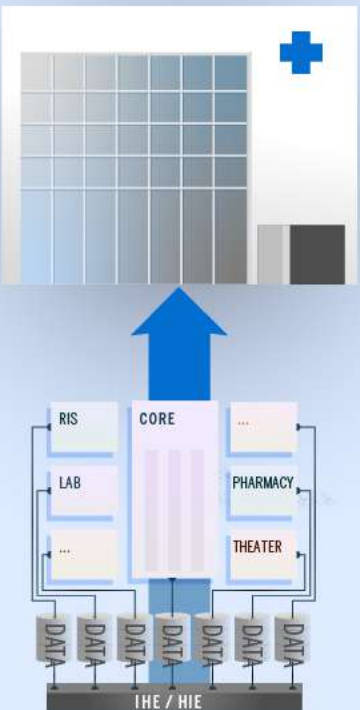
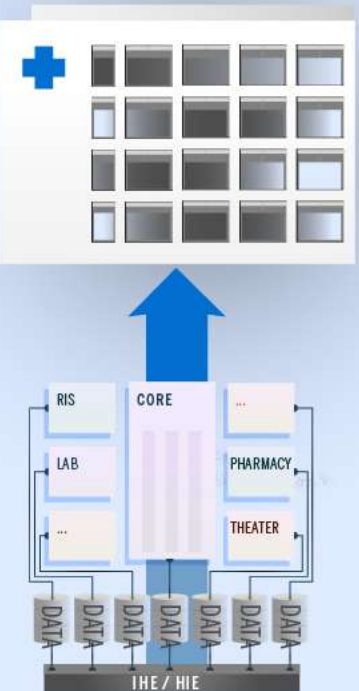


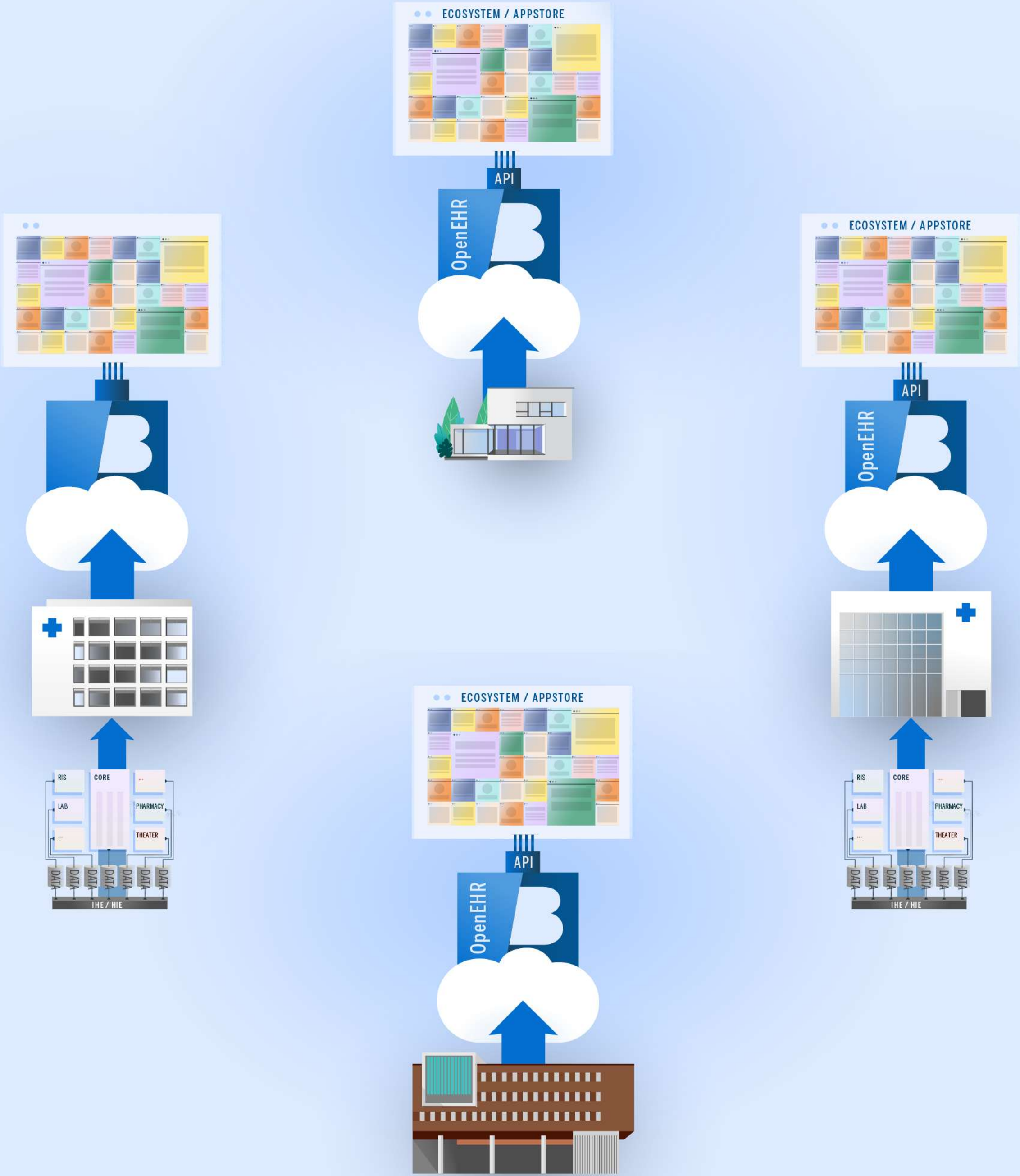


Postmodern EHR



Towards Integrated care systems







A virtual personal health record

Choice of applications,
governance of data
models



A virtual personal health record

Choice of applications,
governance of data
models





Who is leading?



30+ NHS Trusts & 9 regions across all 4 nations in UK use openEHR





HiGHmed - openEHR based PLATFORM FOR INTEGRATING DATA FOR RESEARCH Germany

Generic and scalable platform
architecture for integrating data from
care, research, and external sources
to facilitate the development of new
solutions for medical data analytics





All four leading Nordic EHR vendors use openEHR





HIMSS Analytics[®] STAGE 6

EMRAM

CHILDREN'S HOSPITAL University Medical Center Ljubljana, Slovenia

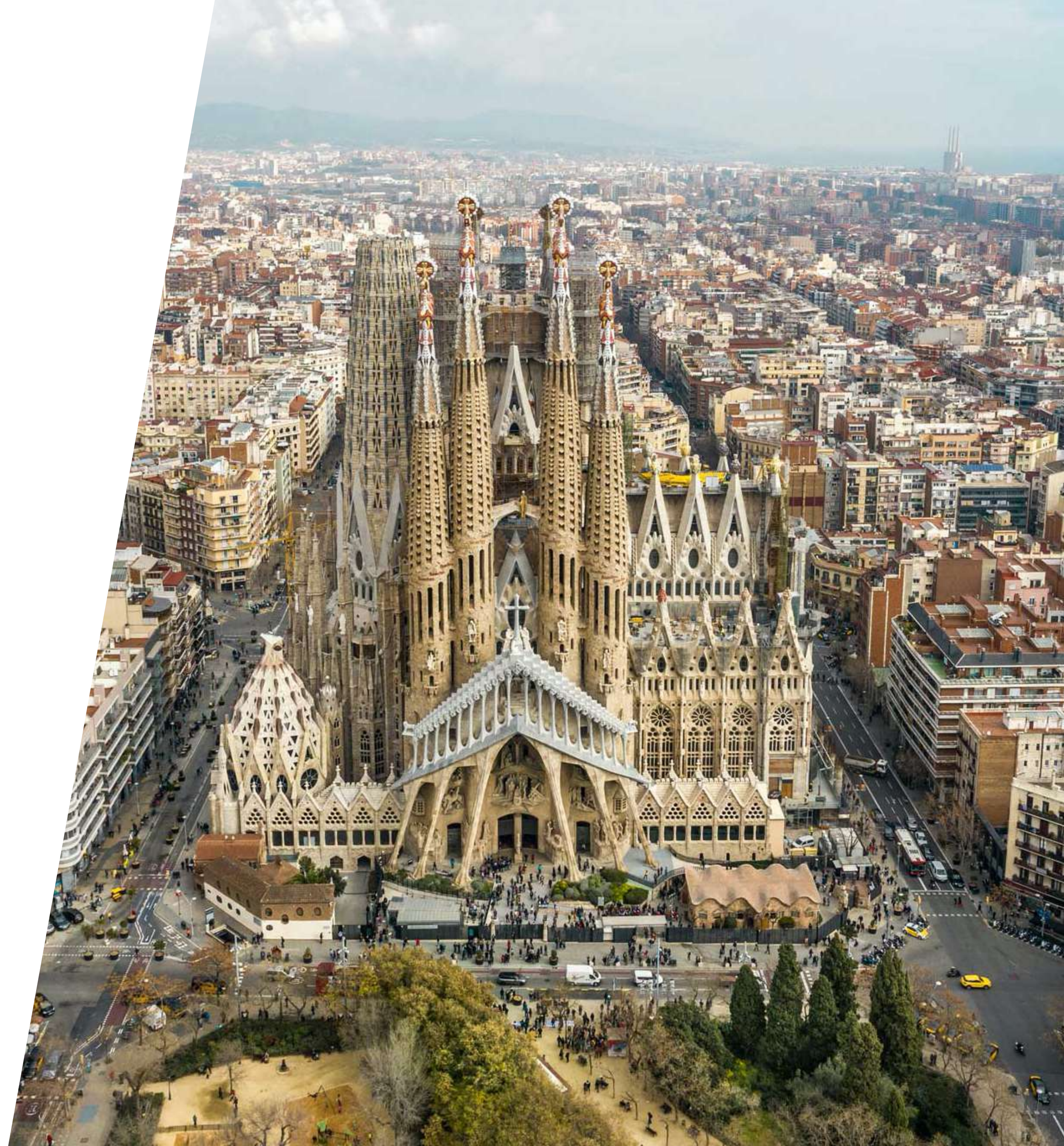
EHR built on a **Digital Health
Platform** based on **openEHR**





Catalan Health Service has announced it will standardise health data on openEHR

Health **data and application**
infrastructure based on **openEHR**:
71 hospitals, 369 primary care
centers, 500 other health care
entities serving **7,6 million citizens**





THE CHRISTIE NHS FOUNDATION TRUST

Manchester, UK

openEHR & Digital health platform
as a foundation for:

- Clinical forms
- PROMs
- Core EHR
- Research



openEHR used by NHS Wales' National Data Resource programme

NWIS, with its **open platform** approach will support important initiatives such as a **cancer treatment** repository and development of a **shared medication** service built upon **openEHR**



OneLondon to design and deliver dynamic care planning based on openEHR across London

Digital health platform will reduce duplication, improve accessibility and enable shared care plans for a variety of clinical pathways including, but not limited to, end of life care.



SLOVENIAN INTEROPERABILITY BACKBONE

Ministry of Health Slovenia

National infrastructure to
exchange
and store clinical documents
and structured health data



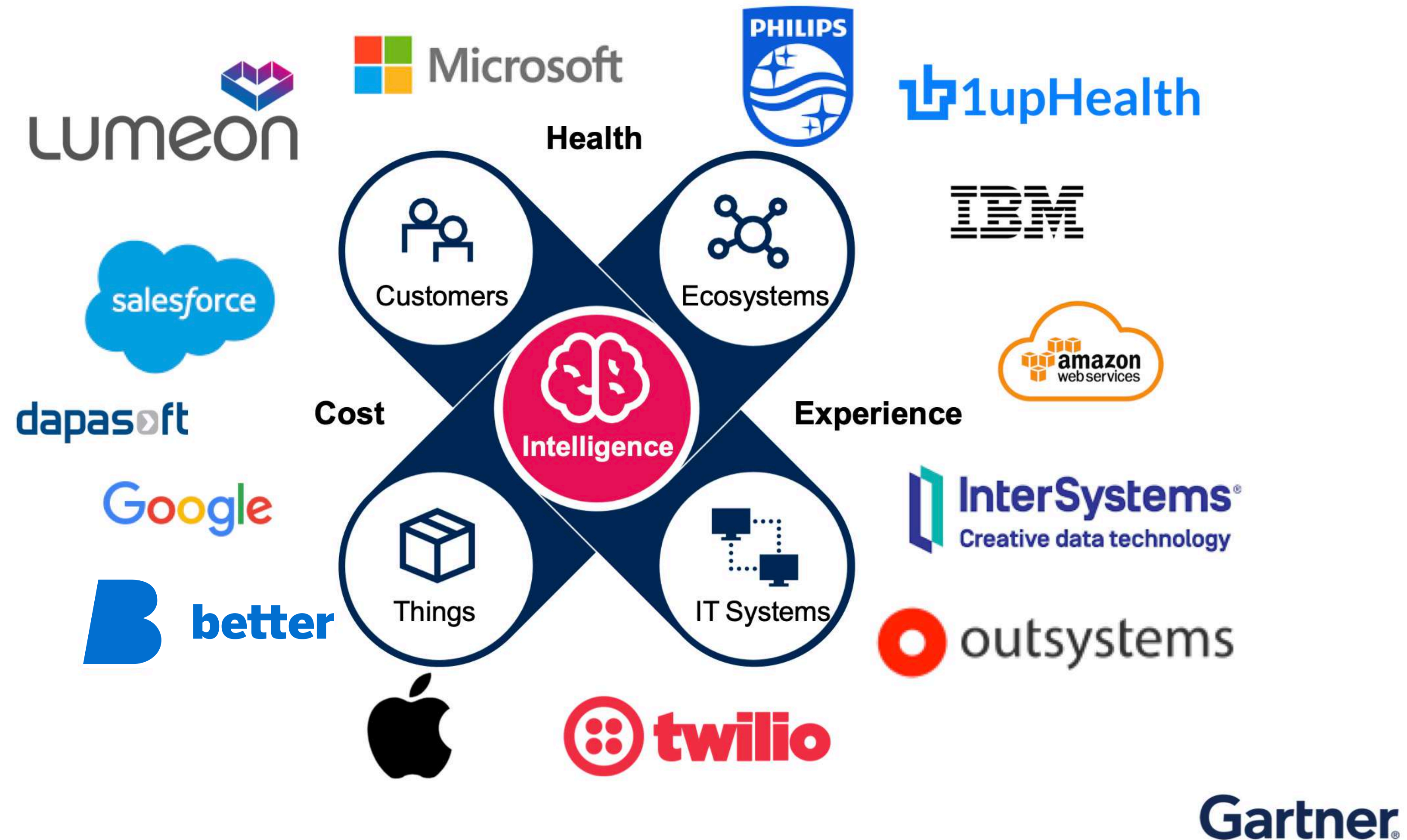
NEHR - NATIONAL ELECTRONIC HEALTH RECORDS PLATFORM

Ministry for Health Malta

National infrastructure to exchange
and store clinical documents and
structured health data



A New Era of Capability Has Rapidly Evolved



“

Data is for life, not just for one system.
If we consider that as a principle, we will
design and procure systems differently.

Rachel Dunscombe
CEO NHS Digital Academy



Better data, Better care

www.better.care

Anze Droljc
anze.droljc@better.care
<https://www.linkedin.com/in/anzedroljc/>